

Enjoy flying, we will arrange the rest for you

State enterprise of the Ministry of Defence LOM PRAHA s.p. is one of the world's leading companies offering complex services for Mil helicopters and L-39 aircraft. Our experienced staff is able to provide a whole range of services starting from helicopter acquisition support, through ground and flight crews training to all levels of helicopter maintenance works including general overhauls and upgrades.



“Aircraft technology operation consists of many essential tasks. We in LOM PRAHA believe that only high-quality services can lead to a safe and a smooth operation of aviation technologies. Customer satisfaction and safety are our top priority, which is the reason why we offer comprehensive services of the highest quality,” says the director of the state enterprise Jiří Protiva.

The main part of our portfolio include:

MRO & Modernizations of Mil helicopters and L-39 aircraft

LOM PRAHA is providing MRO & life cycle support solutions for Mi-2, Mi-8/17, Mi-24/35 helicopters and their equipment (MRO - maintenance, repairs and overhaul; airframe, aggregates and dynamic components/drive units) as well as MRO of L-39 aircraft (including AI-25TL engines).

In addition, we provide repair services for the MI family helicopters in the NATO and EU countries which are certified by the Russian MVZ Mil and OAO Klimov design bureaus, the Interstate Aviation Committee MAK and domestic aviation authorities.

We are also a Mil-certified provider of modernisation solutions for Mil helicopters. Machines modernised by LOM PRAHA are battle tested in ISAF Afghanistan, where they proved to be 100% reliable and combat-effective.

We have established a long-term cooperation with leading manufacturers of avionics and other aircraft and helicopter components to be able to deliver turnkey



Jiří Protiva, CEO of LOM PRAHA s.p.

modernisation solutions for Mil helicopters. Years of R&D, qualified technicians and a profound know-how result in truly functional and unique modernisation capabilities, which were battle tested in ISAF Afghanistan with 100% efficiency and reliability. LOM PRAHA is capable to bring the best of „both worlds“ together by combining and successfully integrating western technologies into Russian reliable and durable helicopters. We are the only company outside the Russian Federation certified to modernise Mil helicopters by the Mil Design Bureau.

Drive Units MRO - TV3-117, AI-25TL, AI-9V, VR-14/24

LOM PRAHA fully supports the dynamic component and aggregate life cycle of Mil helicopters and L-39 aircraft. We provide acquisitions, adjustments, repairs,



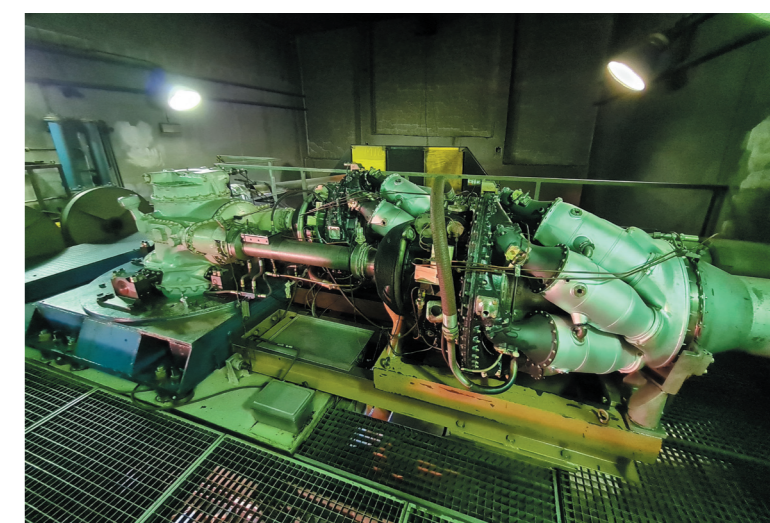
maintenances, overhauls and testing & analysis of TV3 117 turbo shaft engines (in all of its variants), AI-9V APUs and AI-25TL turbopans, as well as VR-14/24 gearboxes. All offered services are carried out in accordance with the documented technical requirements and under certification of the OEM manufacturers.

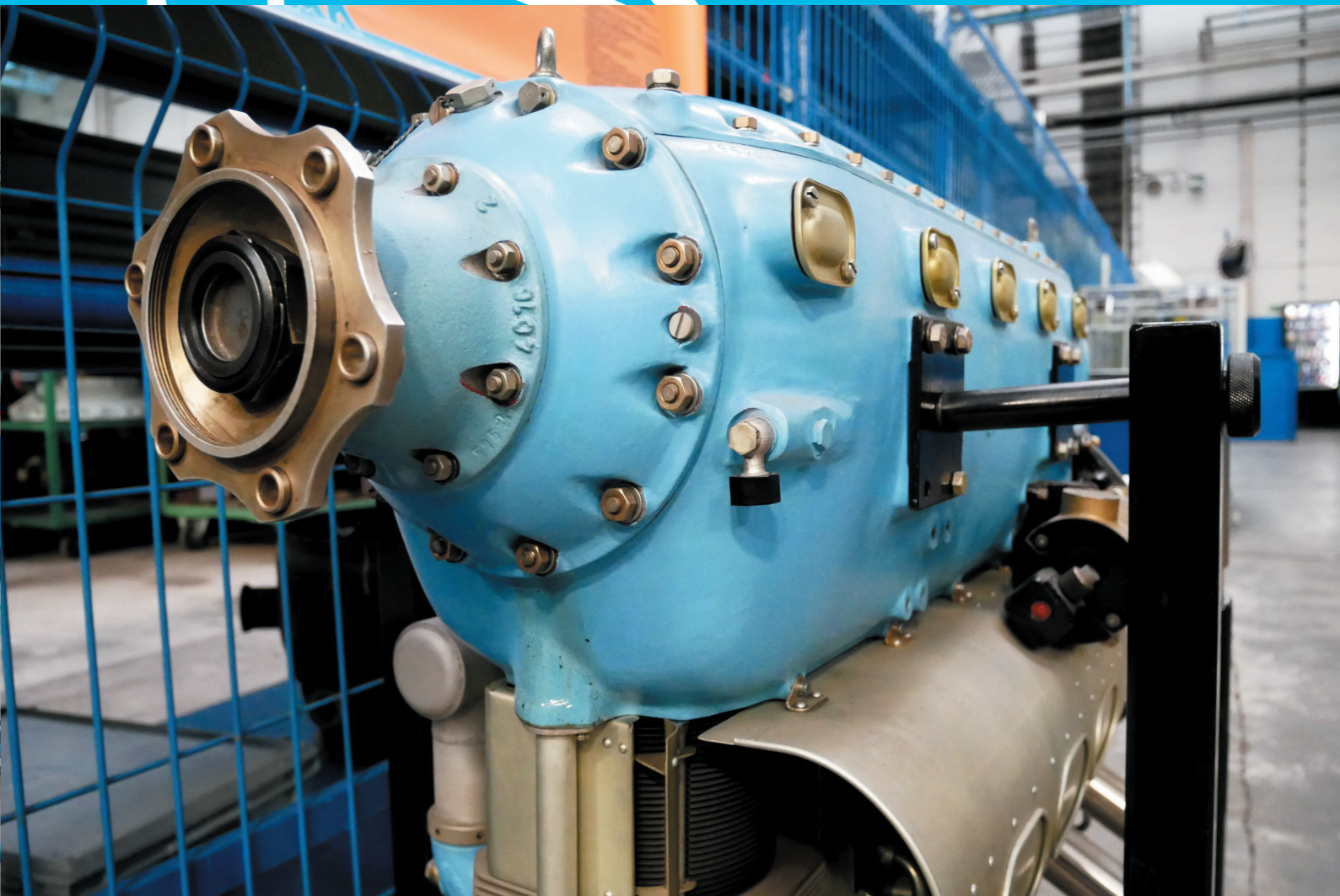
MRO includes Engine / Gearbox /APU / Aggregate / Sub-component technological inspection, disassembling, cleaning, crack detection, damaged parts replacing or overhauling, overhauled items assembling and installation, rotation balancing, testing etc. All mentioned works can be performed at LOM facilities under our quality department supervision. LOM PRAHA has its own test facilities for setting and trimming of Engines, Gear Boxes and APUs.

Flight, Ground & Simulated Training

LOM PRAHA's Flight Training Centre (CLV) in Pardubice provides comprehensive and modular training programs for both fixed wing and rotary wing aircraft pilots, flight engineers, ground crews and maintenance personnel. The offered training and skill improvement programs are carried out with the use of modern interactive teaching methods, state of the art simulators and real flights with

our own Mil helicopter and airplane fleet. All courses are taught and supervised by our professional employees, which are former Air Force veterans with valuable experiences.





Tactical Simulated Training

Tactical simulation training provided by LOM PRAHA covers training of various tactical situations and skills devoted to tactical air force pilots. Training is provided at a modern Tactical simulation centre (located at Pardubice air force base) equipped by the latest technologies allowing visualization and perception close to reality.

In comparison to a real aircraft, simulation-based training allows for the training of manoeuvres or situations that may be impractical, or even dangerous to perform in the aircraft, while keeping the pilots in a relatively low-risk environment on the ground. Flight simulation also provides an economic advantage over training in a real aircraft.

Parameters such as aircraft/weapons/radar performance can be modified according to request of a customer. Controls and cockpit layout for a different type of aircraft can be modified on the basis of agreement.



Production & MRO of Piston Engines

- EASA certified in the category of „General Aviation“
- High degree of reliability proven over the last 60 years
- Excellent power to weight ratio of 0,85kg / kW
- Robust engineering that guarantees a TBO (time before overhaul) of 2000 hours
- Reliability proven in extreme weather conditions with low/high air temperatures and humidity (from -40°C to +40°C and humidity of 35-100% up to altitudes of 6000 meters)
- Engines are designed and engineered with acrobatic use in mind (+6/-3,5g up to +8/-5g)
- Certified to run on automotive MOGAS according to EN228
- Low combined fuel consumption of 233g / kW / hr
- Supercharging allows performances in high altitudes
- Lowest frontal drag resistance in their category

LOM PRAHA s.p.

Tiskarska 270/8,
108 00 Praha 10
Czech Republic
Phone: +420 296 505 551
E-mail: lompraha@lompraha.cz

www.lompraha.cz

www.facebook.com/lompraha
<https://www.linkedin.com/company/lom-praha-s-p>
<https://www.instagram.com/prahalom/?hl=cs>

